

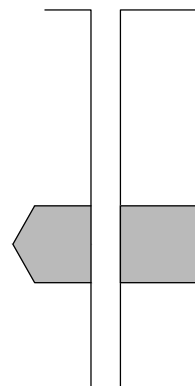


# ABACO TIPOLOGICO

Abaco delle tipologie edilizie presenti nel Centro Matrice

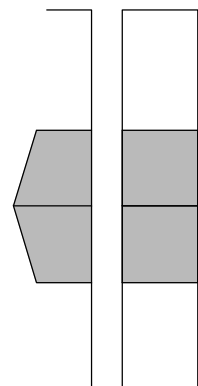
## Impianti planimetrici di base a una o due cellule

Aa Impianti planimetrici di base a due cellule



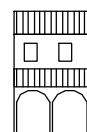
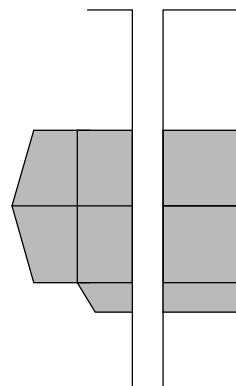
SCHEMA BASE

Aa-1 Bicellula in profondità su un livello

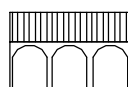
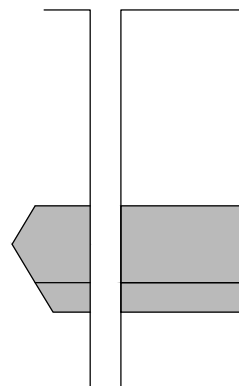


SVILUPPO IN PROFONDITA'

Aa-3 Bicellula in profondità su due livelli, con loggiato

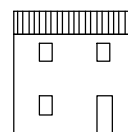
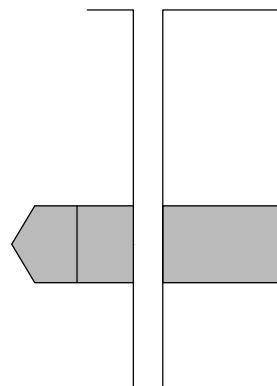


Aa-4 Bicellula in larghezza su un livello, con loggiato



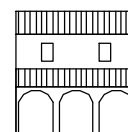
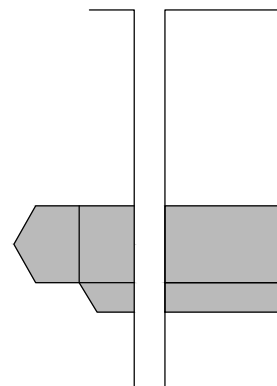
SVILUPPO IN LARGHEZZA

Aa-5 Bicellula in larghezza su due livelli

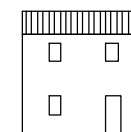
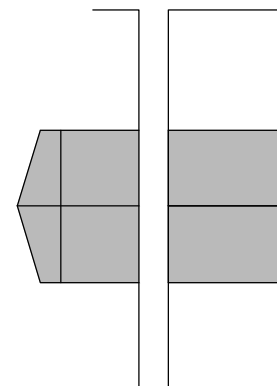


SVILUPPO IN ALTEZZA E LARGHEZZA

Aa-6 Bicellula in larghezza su due livelli, con loggiato

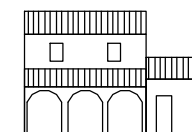
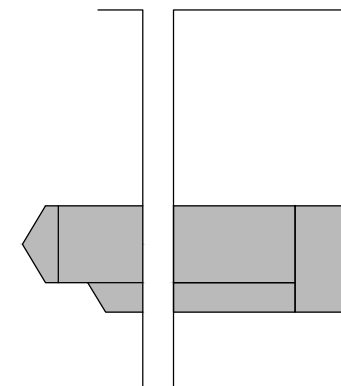


Aa-8 Bicellula in larghezza e in profondità su due livelli



SVILUPPO IN PROFONDITA', ALTEZZA E LARGHEZZA

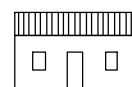
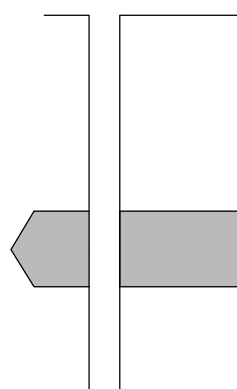
Aa-9 Bicellula in larghezza su due livelli, con loggiato e aggiunte laterali



Abaco dei tipi edilizi a corte doppia e antistante

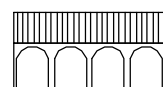
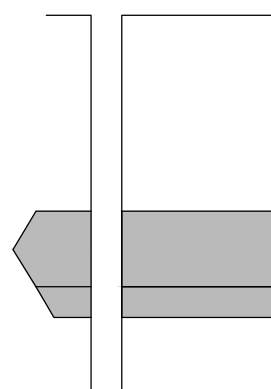
## Impianti planimetrici di base a tre o più cellule

Ab Impianti planimetrici di base a tre o più cellule



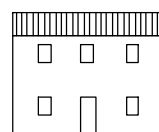
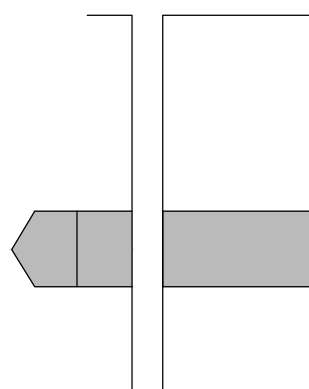
SCHEMA BASE

Ab-1 Tre o più cellule in larghezza su un livello, con loggiato



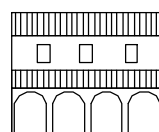
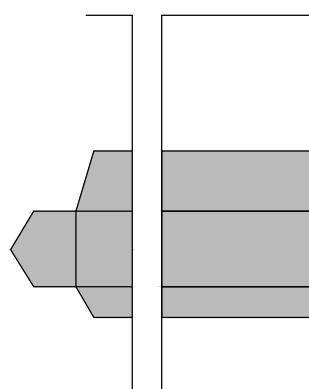
SVILUPPO IN LARGHEZZA

Ab-2 Tre cellule in larghezza su due livelli



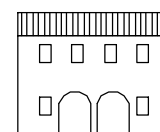
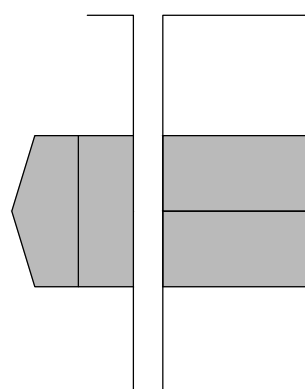
SVILUPPO IN ALTEZZA

Ab-3 Tre cellule in larghezza su due livelli, con aggiunta sul retro e loggiato

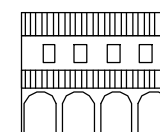
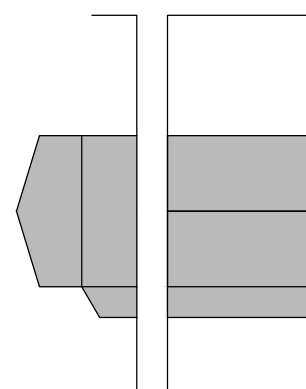


SVILUPPO IN LARGHEZZA, IN PROFONDITÀ E IN ALTEZZA

Ab-5 Tre o più cellule in larghezza su due livelli, con loggiato inglobato



Ab-6 Tre o più cellule in larghezza e in profondità su due livelli, con loggiato giustapposto

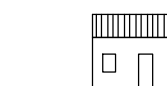
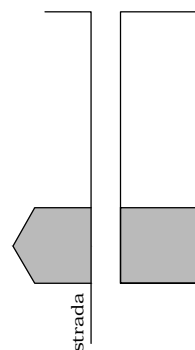


# ABACO TIPOLOGICO

Abaco delle tipologie edilizie presenti nel Centro Matrice

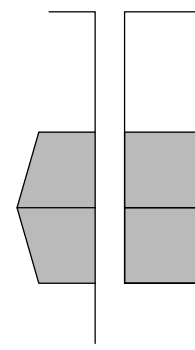
## Impianti planimetrici di base a due cellule

Ba impianti planimetrici di base a due cellule



SCHEMA BASE

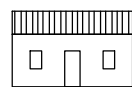
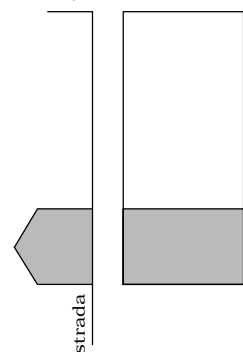
Ba-1 Bicellula in profondità su un livello



SVILUPPO IN PROFONDITA'

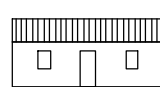
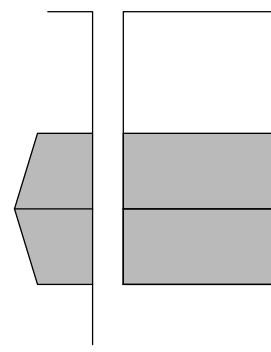
## Impianti planimetrici di base a tre o più cellule

Bb Impianti planimetrici di base a tre o più cellule



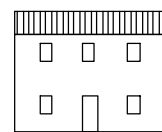
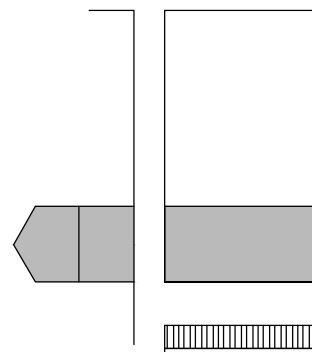
SCHEMA BASE

Bb-1 Tre cellule in larghezza e in profondità su un livello, con "sala"



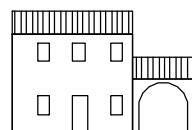
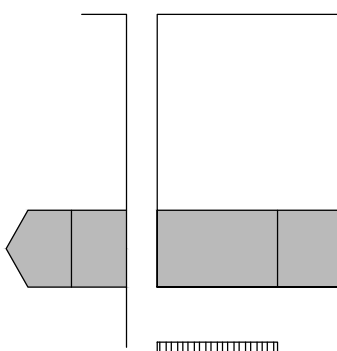
SVILUPPO IN LARGHEZZA

Bb-2 Tre cellule in larghezza su due livelli



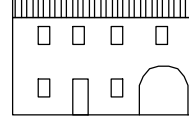
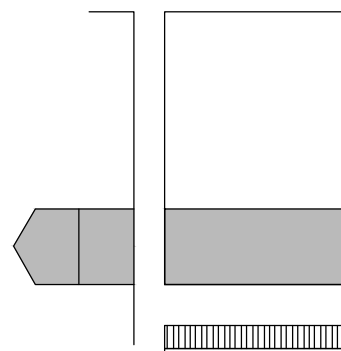
SVILUPPO IN LARGHEZZA E IN ALTEZZA

Bb-3 Tre cellule in larghezza su due livelli, con passo carraio laterale



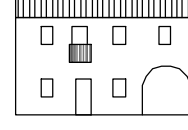
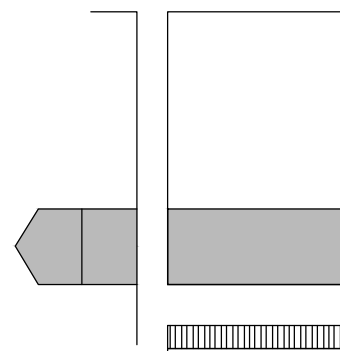
SVILUPPO IN LARGHEZZA E IN ALTEZZA

Bb-4 Tre cellule in larghezza su due livelli, con passo carraio inglobato



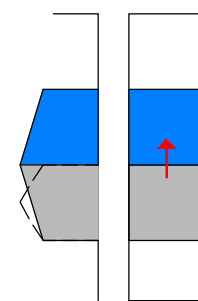
SVILUPPO IN LARGHEZZA E IN ALTEZZA

Bb-7 Palazzetto con tre cellule in larghezza su due livelli, con passo carraio inglobato

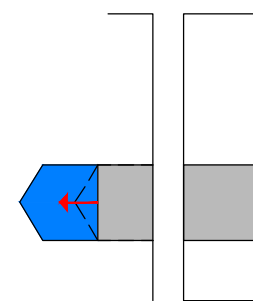


SVILUPPO IN LARGHEZZA E IN ALTEZZA

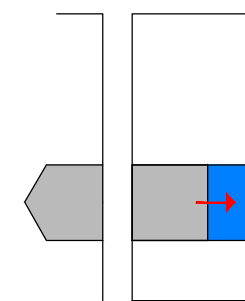
## Sviluppo delle abitazioni di base a una o due cellule



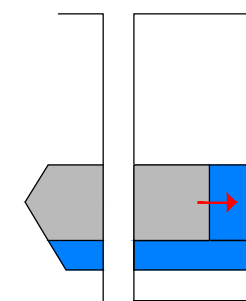
SVILUPPO IN PROFONDITÀ



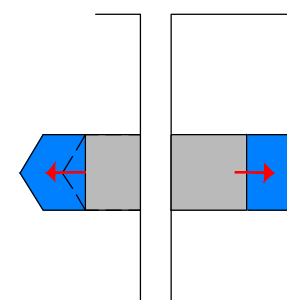
SVILUPPO IN ALTEZZA



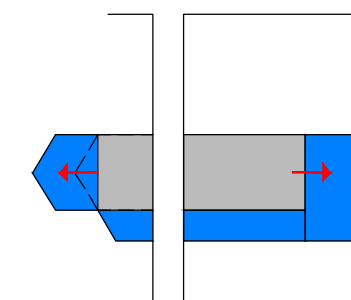
SVILUPPO IN LARGHEZZA



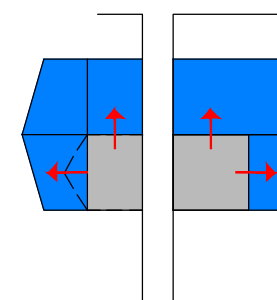
SVILUPPO IN LARGHEZZA E LOGGIATO



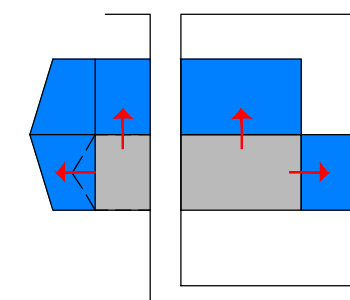
SVILUPPO IN LARGHEZZA E IN ALTEZZA



SVILUPPO IN ALTEZZA, LARGHEZZA E PROFONDITÀ

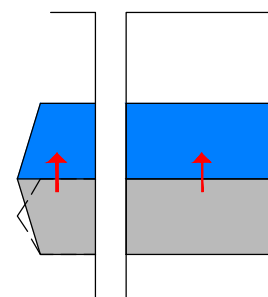


SVILUPPO IN LARGHEZZA E PROFONDITÀ

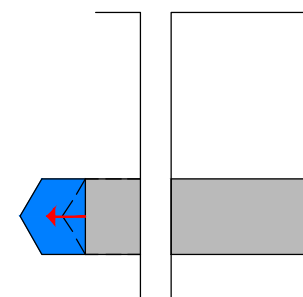


SVILUPPO IN ALTEZZA, LARGHEZZA E PROFONDITÀ

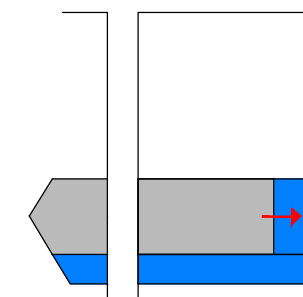
## Sviluppo delle abitazioni a tre o più cellule



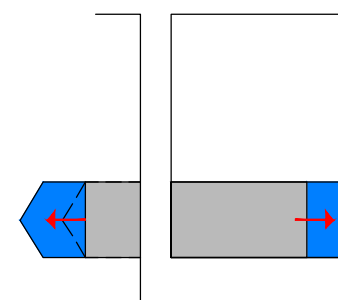
SVILUPPO IN PROFONDITÀ



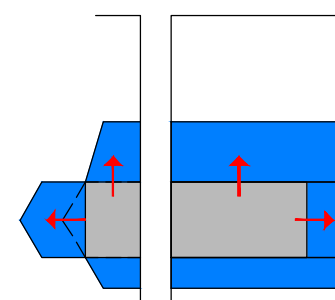
SVILUPPO IN ALTEZZA



SVILUPPO IN LARGHEZZA E LOGGIATO



SVILUPPO IN LARGHEZZA E IN ALTEZZA



SVILUPPO IN LARGHEZZA, IN PROFONDITÀ E IN ALTEZZA